

# Biosphere Forests for the Future

## - Funding Opportunities

*International Forest Symposium*

*Umeå, December-2018*

**Caroline Grabbe**

Grants Office

E-mail: [caroline.grabbe@slu.se](mailto:caroline.grabbe@slu.se)

[www.slu.se](http://www.slu.se)

# Grants Office SLU

## Contact

name.name@slu.se

grantsoffice@slu.se



**Karl Jäghagen**  
Caroline Grabbe (S)

**Frank Sterner**  
**Hallvard Wie**  
**Lars Erik Lindell**  
**Staffan Lund**  
Fiona Reid (VH)  
Ulf Westerlund (NJ)

**Christer Borglin**  
Michelle Cleary (LTV)

[SLU Grants Office >>](#)

# Grants Office

The main support unit for External Funding at SLU

- Information about **funders, calls and conditions**
- SLU Web pages for External funding
- **Advice** on applications
- **Contracts**
- **Education and information** events
- Support and development of **tools and systems (Prisma, Pivot)**
- Strategic work (EU)
- [Seed money](#) (proposal development, coordinator grant, training support)
- Research coordinator support for complex applications

# European Funding

Horizon 2020



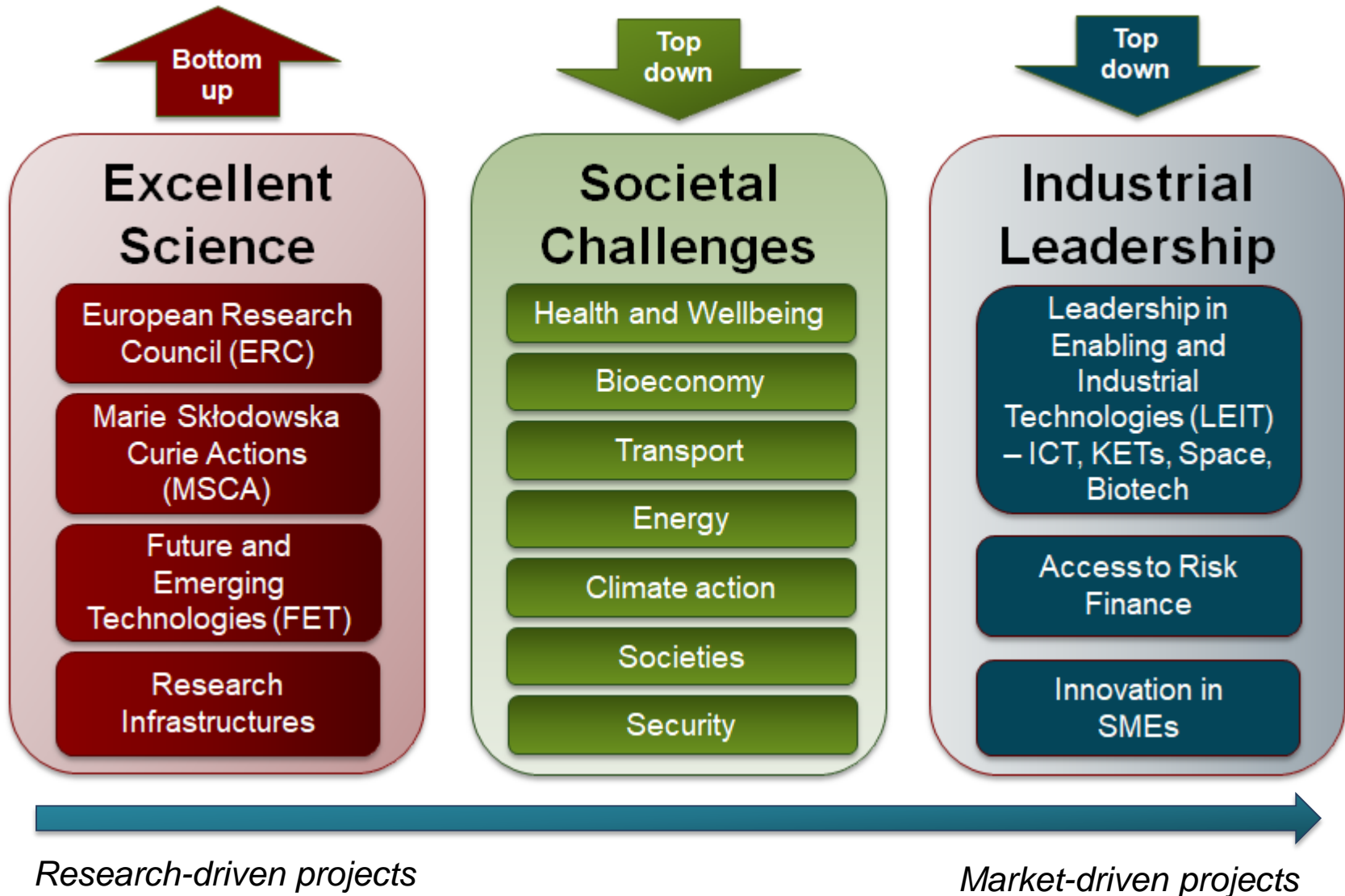
# What is Horizon 2020?

- EU's framework programme for research and innovation 2014-2020.
- Third Work Programme 2018-2020.
- Focus on specific challenges – SOCIETAL CHALLENGES and INDUSTRIAL LEADERSHIP.
  - *Responding to the economic crisis*
  - *Addressing peoples concerns (security, livelihood, environment)*
  - *Strengthening EU's global position in research, innovation and technology*
  - *Creating new businesses and new jobs!*



# Horizon 2020 priorities

## From research to market



## Pillar 3 (and 2)

### Social Challenges (& Industrial Leadership)

- Calls are **challenge-based**
- Emphasis on **innovation** and **impact**
- **Inter-disciplinary** and **cross-sectoral**
- **Collaborative** projects
  - *Minimum 3 partners from 3 different member countries (MC) or associated countries (AC)*
- You can be **coordinator** or partner
- **Impact** = 1/3 of the evaluation score
  - *Expected Impact stated by EU*
  - *Products, services, solutions, policy recommendations*
  - *Dissemination*
  - *Communication*



# Types of Actions in H2020

## ➤ **RIA - Research and Innovation Action**

- 100% funding
- At least three partners from three EU countries

Flat rate for  
indirect costs:  
25%

## ➤ **IA - Innovation Action**

- 70% funding (except non-profit organizations that get 100%)
- Produce plans & arrangements or designs for new, altered or improved products, processes or services
- At least three partners from three EU countries

## ➤ **CSA - Coordination and Support Action**

- Min. 1 part, less money, shorter duration
- Accompanying measures (standardization, dissemination, policy dialogues etc.)
- No research



# EU Calls in WP2018-2020

## ➤ **Specific Challenge**

- Broader topics
- Gives the context
- Describes why it is important for the EU

## ➤ **Scope**

- What is this specific call about
- Specifies the focus and boundaries of the potential action
- Amount of funding for anticipated projects

## ➤ **Expected impact**

- What does EU expect to get out of this project?
- Address all issues in the specific challenge!

# New EU portal for finding calls



## Funding & tender opportunities Single Electronic Data Interchange Area (SEDIA)

[SEARCH FUNDING & TENDERS](#)[HOW TO PARTICIPATE](#)[PROJECTS & RESULTS](#)[WORK AS AN EXPERT](#)[SUPPORT](#)

### Horizon 2020 Framework Programme

☐ Match whole words only☒ GRANTS☐ TENDERS

#### Filter by submission status



FORTHCOMING



OPEN



CLOSED

#### Filter by programme (only for grants)

H2020



Filter by programme part

### Funding and tenders

Sort by: ☒ opening date ▲☐ title☐ ID

19 results



Download all funding and tender opportunities to your calendar or subscribe to the RSS feed (unfiltered).

[See all calls for tenders published by EC](#)

Grant

#### Building a water-smart economy and society CE-SC5-04-2019

Types of action: Innovation action | Programme: Horizon 2020

Open for submission

Opening date: 14 November 2018



Topic

Oct 27, 2017

## Inter-relationships between climate change, biodiversity and ecosystem services

ID: LC-CLA-06-2019

**Focus area:** Building a low-carbon, climate resilient future (LC)

Type of action:

- RIA Research and Innovation action

Deadline Model : two-stage

Deadline/s/

Opening: 14 November 2018

Type of action

One-stage or Two-stage calls

Deadline: 19 February 2019 17:00:00 Brussels time  
2nd stage Deadline: 04 September 2019 17:00:00 Brussels time

Open



See budget overview

Information about anticipated number of grants

# Horizon 2020

## – Calls relevant for BRs (deadline 2019)

Funding Scheme	Call	Max amount	Deadline
SC5 (RIA)	LC-CLA-02-2019: Negative emissions and land-use based mitigation assessment	5-7 M€	19 Feb 2019
SC5 (IA)	LC-CLA-06-2019: Inter-relations between climate change, biodiversity and ecosystem services	5-7 M€	19 Feb 2019
SC2	LC-CLA-09-2019: ERA-NET Cofund action on biodiversity and climate change: Impacts, feedbacks, and nature-based solutions for climate change adaptation and mitigation	5 M€	19 Feb 2019

# Horizon 2020

## Calls within SC2 (deadline 2020)

(Food security, sustainable agriculture and forestry, marine, maritime and inland water research and the bioeconomy)

Funding Scheme	Call	Max amount	Deadline
SC2 (RIA)	LC-SFS-22-2020 - Forest soils	5-7 M€	Jan/Feb 2020
SC2 (RIA)	LC-RUR-11-2019-2020: Sustainable wood value chains - B. [2020] Resilient forest systems	5 M€	Jan/Feb 2020

### LC-SFS-22-2020 - Expected impact:

- On short to midterm, improved, harmonised methodologies for estimation of emissions and removals in the \*LULUCF sector of greenhouse gas inventories Europe-wide;
- On mid to long-term, strengthened knowledge base and capacity for forest managers to adopt silvicultural techniques and forest management practices conducive to enhanced contribution of the sector to the global climate change mitigation objectives.
- Also on mid-long term, more sustainable forest management and contribution of the forest-based sector to the increasing and diversifying societal demands toward forest resources.

*\*Land Use, Land-Use Change and Forestry*

# Horizon 2020

## Calls within SC2 (deadline 2020)

(Food security, sustainable agriculture and forestry, marine, maritime and inland water research and the bioeconomy)

Funding Scheme	Call	Max amount	Deadline
SC2 (RIA)	LC-SFS-22-2020 - Forest soils	5-7 M€	Jan/Feb 2020
SC2 (RIA)	LC-RUR-11-2019-2020: Sustainable wood value chains - B. [2020] Resilient forest systems	5 M€	Jan/Feb 2020

### LC-RUR-11-2020 [B] - Expected impact:

- Increased long-term resilience of forest production systems and associated value chains to enhanced climate/environmental change and societal demand [sub-topic B];
- Enhanced contribution of forest-based sector to long-term climate change mitigation, adaptation and rural development objectives [sub-topics A & B];
- Also in the long-term, prompt a sizeable positive change to European landscapes and economies, by keeping the countryside green and serving to make the cities greener, and increasing the share of both decent and green jobs [sub-topics A & B].

# Horizon 2020

## – Calls within SC5 (deadline 2020)

[\(Climate action, environment, resource efficiency and raw materials\)](#)

Funding Scheme	Call	Max amount	Deadline
SC5 (RIA)	LC-CLA-10-2020: Scientific support to designing mitigation pathways and policies	4-5 M€	Jan/Feb 2020
SC5 (RIA)	LC-CLA-12-2020: Advancing climate services	4-6 M€	Jan/Feb 2020
SC5 (RIA)	LC-CLA-16a-2020: Forest Fires risk reduction: towards an integrated fire management approach	10 M€	Jan/Feb 2020

### LC-CLA-12-2020 – Advancing climate services

#### Specific challenge

Under the Paris Agreement it was agreed to [enhance adaptive capacity, strengthening resilience and reducing vulnerability to climate change](#), with a view to contributing to sustainable development and ensuring an [adequate adaptation response](#). It was also recognised that there is a need to enhance action on adaptation with regard to [strengthening scientific knowledge on climate, including research, systematic observation of the climate system and early warning systems](#), in a manner that [informs climate services and supports decision-making](#), including the economic analysis of adaptation options for key impact areas. Recent advances have led to the creation of very large amounts of climate data. It is imperative that we are able to use said data and [create services that communicate and deliver critical climate information to inform risk-aware decision making and adaptation strategies](#).

## LC-CLA-12-2020 – Advancing climate services (cont.)

**Scope:** The proposed action should address only one of the following:

- a) Mapping European coastal infrastructure at risk from sea-level rise**
- b) Detection and attribution of extreme events**

### **c) Impacts of overshooting**

Understanding [how rising global temperature translates to impacts for society and natural ecosystems](#) is critical to prepare for, and strive to reduce, the magnitude of climate change. While global temperature is a good indicator of global change, local impacts can be much more pronounced. Actions should [assess and report on the impacts associated with overshooting temperature goals set by the Paris Agreement in 2015](#). Actions should highlight [regional differences](#) in associated impacts and [identify possible adaptation measures and solutions](#).

### **Expected impacts:**

The project results are expected to contribute to:

- Enhanced adaptive capacity
- Reduced vulnerability to climate change
- Enhanced action on adaptation
- Strengthened scientific knowledge on climate
- Better informed climate services and decision-making

### **Project size (as EU contribution) in the range of:**

EUR 4 to 6 million



# Horizon 2020

## Marie Skłodowska Curie Actions



### ➤ **MSCA – Innovative Training Networks (ITN)**

- Main EU programme for structured doctoral training
- Min. 3 partners from 3 European countries
  - Preferentially involving wide partnership of institutions from academic and non-academic sectors
- Max. 15 PhD students (ESRs), funded max. 3 years each.
- Overarching aim for the consortium, with defined PhD student projects that contribute to achieve this aim.
- *Annual deadline in January*

### ➤ **MSCA – Research and Innovation staff exchange (RISE)**

- Aims to promote international and inter-sector collaboration through research and innovation staff exchanges, promotion of new partnerships.
- Should involve institutions from the academic and non-academic sectors.
- 1-12 months secondments, max. 540 for each MSCA-RISE project
- Flexible – small/large project, may include any type of staff exchange.
- *Annual deadline in April*

# COST actions

## Cooperation in Science and Technology

- COST is a pan-European intergovernmental framework, dedicated to European-based S&T networking activities aiming at allowing their participants to jointly develop their ideas and new initiatives.
- COST has been designed to close the gap between science, policy makers and society.
- The COST Mission is to enable breakthrough scientific developments, leading to new concepts, services and products and thereby contributing to strengthening European research and innovation capacities.
- COST is open to researchers, engineers and scholars from universities, research centres, companies, in particular small and medium-sized enterprises (SMEs), as well as other stakeholders and relevant legal entities.
  - All the relevant information to manage a COST Action is presented in the COST Vademecum (<http://www.cost.eu/Vademecum>).
- COST Actions are set up to achieve specific objectives within their four-year duration based upon the sharing, creation, dissemination and application of knowledge. These objectives can be reached through COST networking tools:
  - ☐ Meetings
  - ☐ Training Schools,
  - ☐ Short-Term Scientific Missions (STSMs)
  - ☐ Dissemination

# COST actions

<https://www.cost.eu/>

- **Pan-European:** the COST inter-governmental framework spans over 36 Full Members and one Cooperating Member
  - **Bottom-up:** in terms of S&T fields and topics, COST welcomes any novel, original and innovative idea;
  - **Open:** in terms of participation, COST Actions can grow in size within their first three years;
  - **Unique:** as a platform to coordinate national research funding and resources within a lightweight framework;
  - **Multi-, Inter- and Transdisciplinary:** bridging different research communities, disciplines, fields and methodologies;
  - **Output and Impact-Oriented:** COST Actions are monitored against their expected output and impact.
- 
- Applying for a COST action:
    - Min. requirement of partners from 7 countries
    - Can be submitted any time during the year, but has two annual collection dates
    - Next collection date: 5th of September 2019

# After H2020 – Horizon Europe



- Next EU framework programme for research and innovation
- Budget 100/120 billion €.

# Other EU funding opportunities

## LIFE



- The LIFE programme is EU's funding instrument for the environment and climate action.
- The general objective of LIFE is to contribute to developing, testing and demonstrating best practises, solutions and integrated approaches to environmental challenges, as well as improving the knowledge base.
- Is managed by DG Environment and DG Climate Action (but administrated by the European Commission and its Agency for SMEs (EASME)).
- LIFE has a budget of €3.4 billion for 2014-2020.
- Divided into two sub-programmes
  - 1) Environment (2.6 billion €)
  - 2) Climate action (864 million €)

### **Different types of LIFE projects**

- 1) Traditional projects
  - Best-practice
  - Demonstration
  - Pilot
- 2) Information, awareness and dissemination projects



## Environment

Environment  
& Resource  
Efficiency

Nature &  
Biodiversity

Environmental  
Governance &  
Information

## Climate Action

Climate  
Change  
Mitigation

Climate  
Change  
Adaptation

Climate  
Governance &  
Information

- Innovative demonstration and pilot projects focusing on implementation of environmental policies.
- Best practise, demonstration and pilot projects focusing on the EU Birds and Habitat directives.
- Information, awareness and dissemination projects, promoting knowledge sharing and increasing awareness/compliance.

- Best practise, demonstration and pilot projects focusing on reducing greenhouse gas emissions.
- Projects focusing on increasing resilience to climate change.
- Increasing awareness, communication, cooperation and dissemination on climate mitigation and adaptation processes.

# LIFE – How to apply

- Annual calls in both sub-programmes, next opening expected in April 2019.
- Open to SMEs, large and medium sized corporates, Non-Government Organisations, Universities and Public Bodies.
- Typical projects have a budget of 1-5 million €, spanning over 3-5 years.
- At present, two different application procedures;

## Environment

*(Indicative  
dates)*

## Climate Action

### Two-stage process

- 10-page concept note in June 2019.  
*(Notifications – Oct 2019)*
- Full proposal with deadline in January 2020.

### One-stage process

- Full proposal with deadline in September 2019.

# LIFE – Some rules

- No minimum number of beneficiaries or demand for transnationality.
- LIFE includes all EU Member States, but no third country has to date chosen to fully participate (but may have negotiated special national agreements).
- Unless otherwise mentioned, LIFE projects have a maximum funding rate of 55% of eligible costs.
  - 60% of eligible costs for projects in the Nature & Biodiversity priority area.
  - 75% of eligible costs for projects that concern priority habitats or species as defined in the Habitats (92/43/EEC) or the Birds Directives (2009/147/EC).
- Co-funding is required!





# Finding funding opportunities

# Defining your project idea

- Before trying to find funding opportunities or writing a proposal, it's key to define your starting point(s):
  - What kind of research do you want to pursue?
  - What is your research interest/focus in the next few years?
  - Write it down – abstract outlining the idea (1-2 pages)
  - Background check:
    - Has this been done before (state of the art review)?
    - Are there any publications related to this idea?
    - Other groups working on it (collaborators or competitors)?
- Based on this background information – look for funding opportunities!



# Matching your idea to the call

- Assessing if this is the call to go for;
  - i. What are the call requirements – read the call text thoroughly.
  - ii. Can your idea be adjusted to the call and can you meet all elements mentioned in the call text?
  - iii. Crystallise your main idea = proposal core.
  - iv. Mind the scope and budget – and structure the project accordingly.
- Grants are meant to facilitate your research – not the other way around!
  - Hence, make sure your initial idea can be adjusted to the call requirements – but not at all costs!
  - In most cases, this is key for writing a competitive application!
- New calls are continuously published – if not a good fit, wait for the next one!



# Pivot

- A global search engine / data base for research funding

- Available to all employees at SLU
- Create tailored searches for specific needs
- Save funding searches and create weekly alerts of new opportunities
- Receive reminder alerts on impending deadlines
- Share funding opportunities with colleagues
- Upload and link a CV or publication page to their profile
- Identify potential research partners worldwide



***“Let Pivot give you weekly e-mail updates on relevant calls  
- after you’ve spent an hour on adjusting your search”***

[Info on SLU internal web >>](#)

[To Pivot >>](#)

[Introduction to Pivot is available in short videos on Youtube >>](#)

# Thank You and Good Luck!



[caroline.grabbe@slu.se](mailto:caroline.grabbe@slu.se)

[grantsoffice@slu.se](mailto:grantsoffice@slu.se)